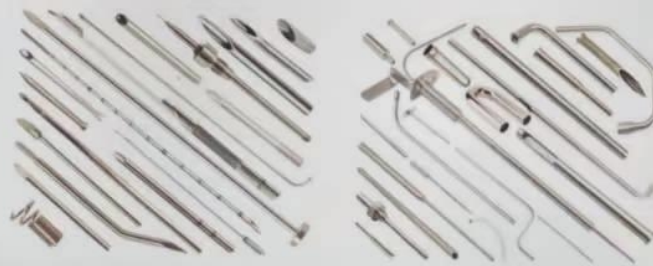


Below is our Hair Choi Pen
The Size from 0.6mm-1.2mm

We also can custom needle and pen according to your drawings or Samples



SHOMEA focus on stainless steel needle and small diameter tube processing.
Welcome send your drawing or sample to us for a quotation.

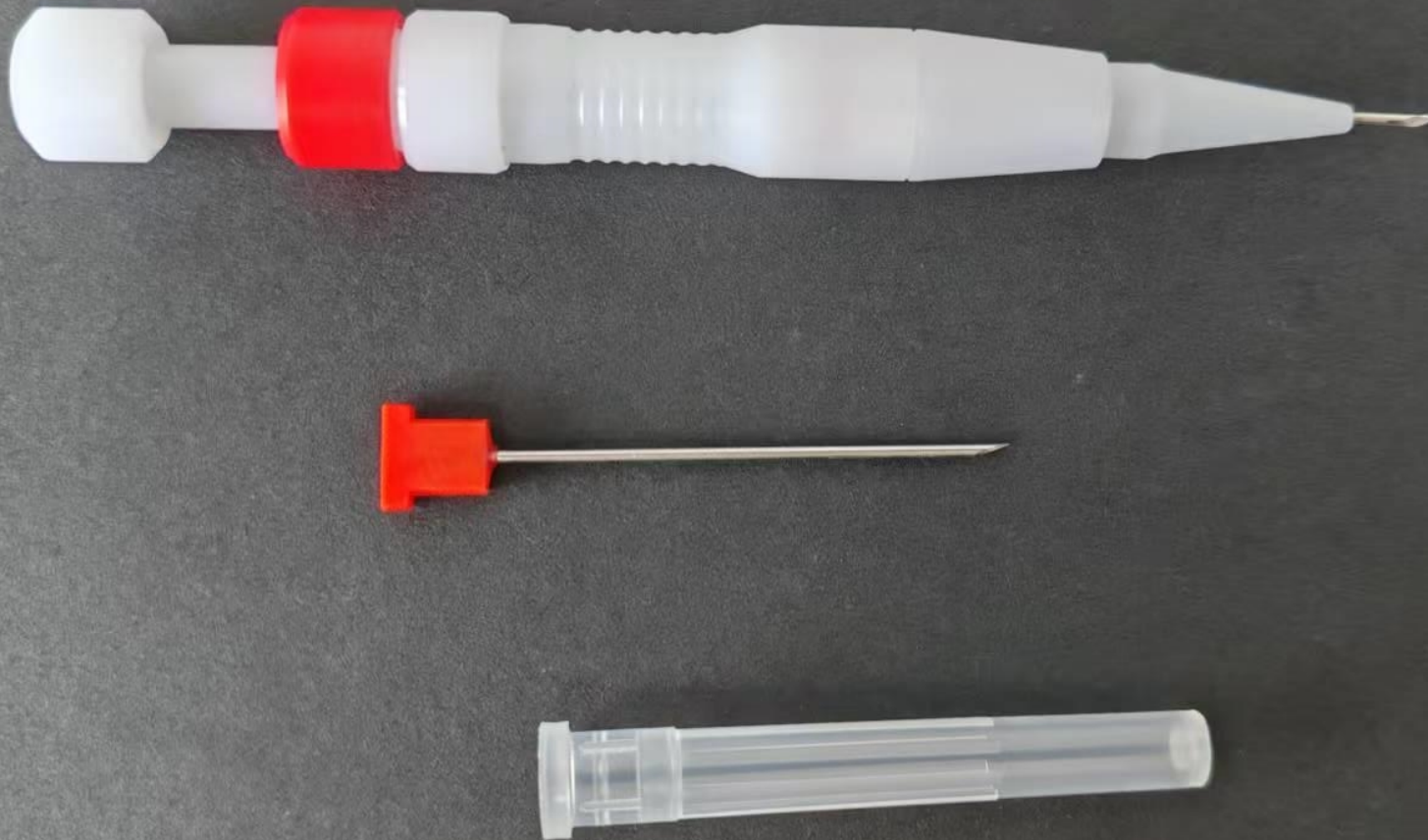


Below is our Fully set needle

The replace needle can be Purchase separately.

The needle size from 0.6mm-0.7mm-0.8mm-0.9mm-1.0mm-1.1mm-1.2mm

If you want to learn more, welcome add my Whatsapp : 0086 19854488641





Those needle is customized according to customers drawing or samples.
Just for reference.
If you have more needle and tube need to custom
Welcome send your drawing or sample to us for a quotation

Shenzhen Shomea Technology Co., Ltd.

☎ 0860 2985448864
✉ joan@shomea.com
🌐 www.shomea.com

518 Yizhan Business Building, No 8, Yizhan Fourth Road, Shapu Community, SongGang Street, 518105, BaoAn District, Shenzhen City, Guangdong Province, China




Joan
Managing Director



Below those is Serrated FUE Punches use for NSK Handle
The size can be custom according to drawing or samples.



Below those is sapphire blade

The Size from 0.8-1.5mm

The length and angle can be customized according to your request

